

WELCOME TO THE MJØSA REGION!

CHOOSE THE MJØSA REGION!

Our municipalities are in «Innlandet», and are only about an hour away from Oslo and Oslo Airport. Our area is characterized by the following:

- Impressive nature, air and clean water
- A good working market, with potential to find a permanent job in time
- Much more affordable living standards than in the Oslo area
- Good schools and kindergarden/day care facilities for children
- Good weather in the summer and winter
- Regular train departures to Oslo Airport and Oslo city

See the additional information sheet for more about our five municipalities:
Elverum, Hamar, Løten, Ringsaker, Stange

CONTACT INFORMATION

PROSJEKT LEADER, LISA GILBERT

Epost: lisa.gilbert@ringsaker.kommune.no — Mob. 48 03 71 81

LEADER OF THE BOARD, GEIR SANDBERG

Epost: geir.sandberg@ringsaker.kommune.no — Mob. 95 28 73 52

THE ACADEMIC PROJECT

Welcome to The Academic Project and to one of the municipalities on the east side of Mjøsa (Norway's biggest lake).

Five municipalities have joined together to make The Academic Project happen, and we are also working closely with companies and businesses in the area. Our goal is that you as a refugee living in this area will get the best opportunities possible, and have the chance to use your skills and education from your home country in your every day life here.

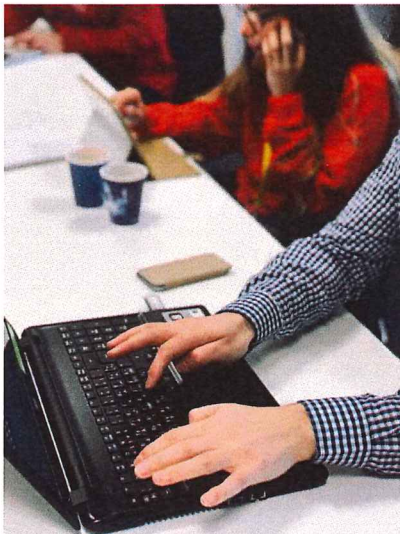
What is The Academic Project?

Our goal is to help refugees with bachelor or master degrees to find an internship that fits with their education and work experience from their home country. Through the project we have established good relationships with many big companies that need different skill sets.

The Academic Project offers a one-year program as a part of the Introduction program for resident refugees. The project year consists of the following:

- A 14 day gathering for all participants to help prepare them for their internship
- Internship(s) in one or two companies over the course of a year 80-100%, with the possibility of transitioning to a normal working relationship afterwards, if it is desirable for the company and the participant.
- Monthly gatherings with different focuses, to share experiences and further qualify themselves for work in Norway, plus follow-up of an online Norwegian course
- Follow-up of the Project Manager in the entire period, and by their own Program Adviser in their own municipality

The goal is that as many participants as possible will receive job offers where they have been interning, or in similar positions in other companies., or that they will continue with studies.



How do I join the project?

1. Let IMDi know that you wish to become a resident in one of our five municipalities.
2. Let the municipality of your choice know that you want to live there, and send them information about yourself .
3. Let the project know that you wish to be considered as a participant after you've moved to your municipality, and later fill out a project application



Who are we looking for?

To apply for the project you should/must:

- Be a resident in one of our five municipalities: Elverum, Hamar, Løten, Ringsaker or Stange
- Have completed higher education equivalent to a Bachelor degree or more
- Speak and write Norwegian at at least level A2
- Be extremely motivated to get a job in and adapt to the Norwegian workforce
- Have already interned in the Norwegian workforce, or have plans on doing so fall/winter 2019

We plan to use fall and winter 2019 to further qualify participants for the project, and that the actual Academic Project will start as soon as possible in 2020.