

THE GEOPOLITICS OF GLOBAL HIGHER EDUCATION

Patricia Pol

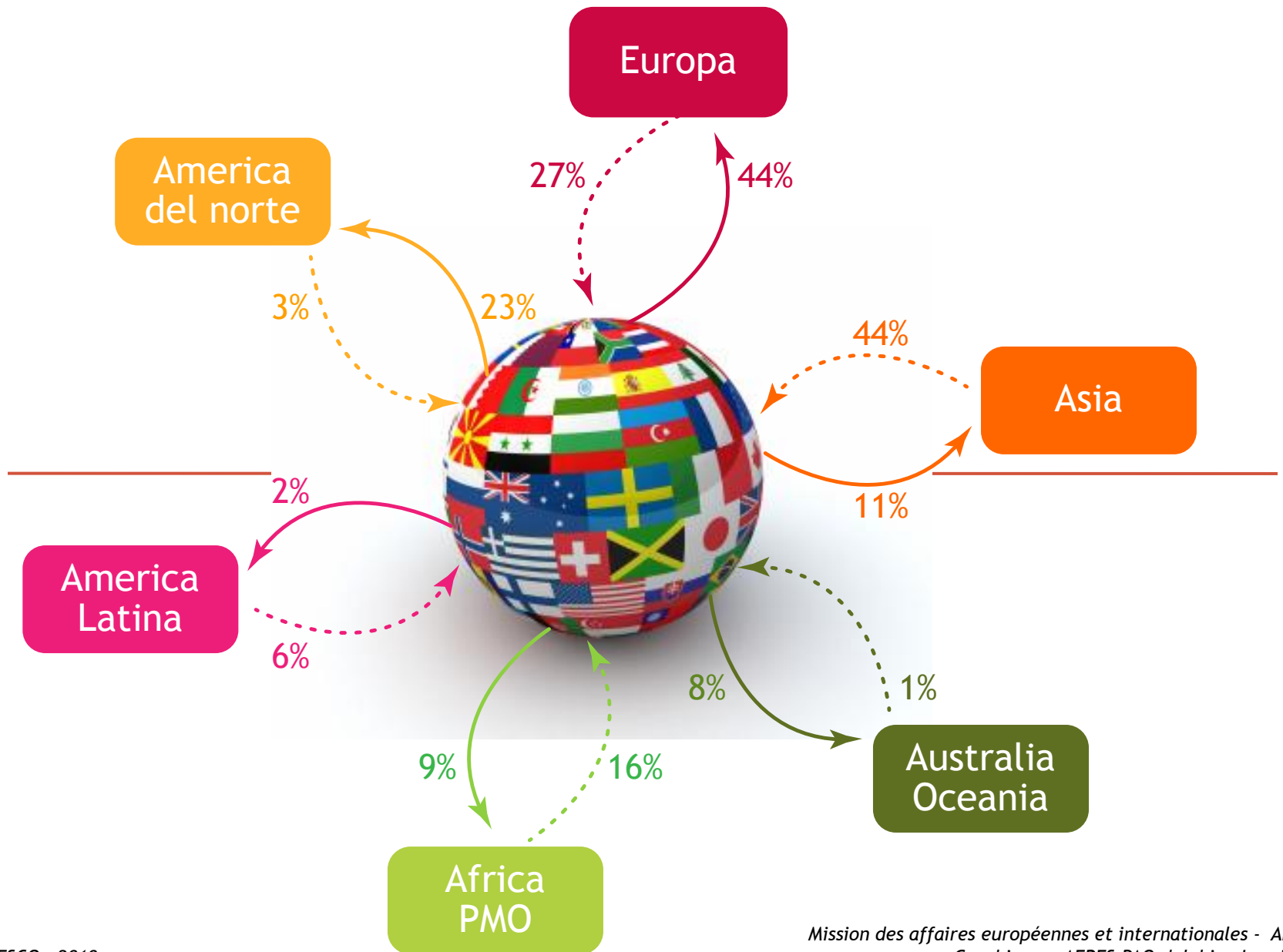
Ministry of Education, Higher Education and
Research, Université Paris-Est Créteil

Patricia.pol@enseignementsup.gouv.fr

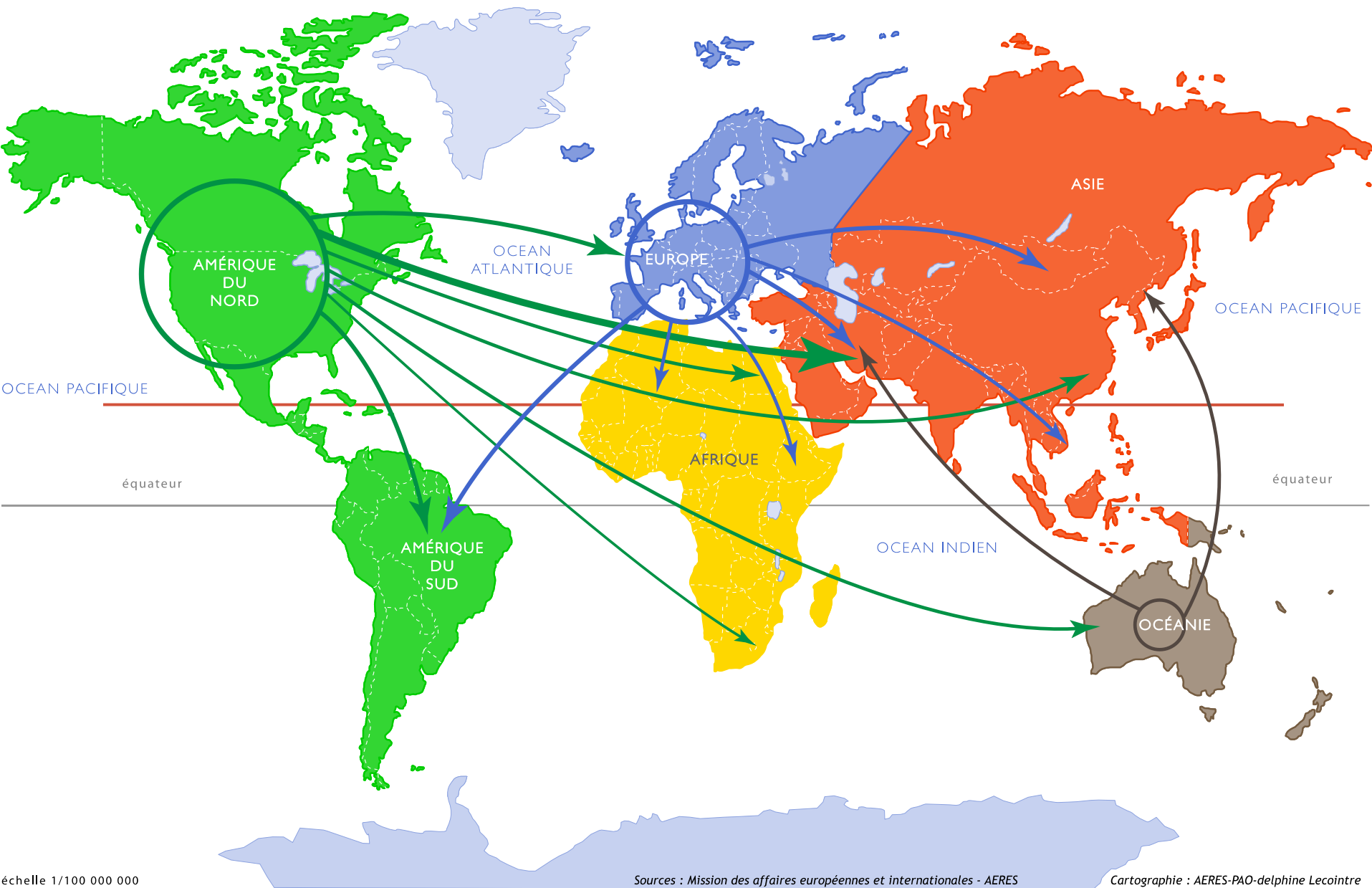
Three important « stampers » for the worldwide HE lanscape

- International student mobility
- Evaluation-Accreditation services
- R&D expenditure and publications

Repartición geográfica de los estudiantes internacionales (en 2012)

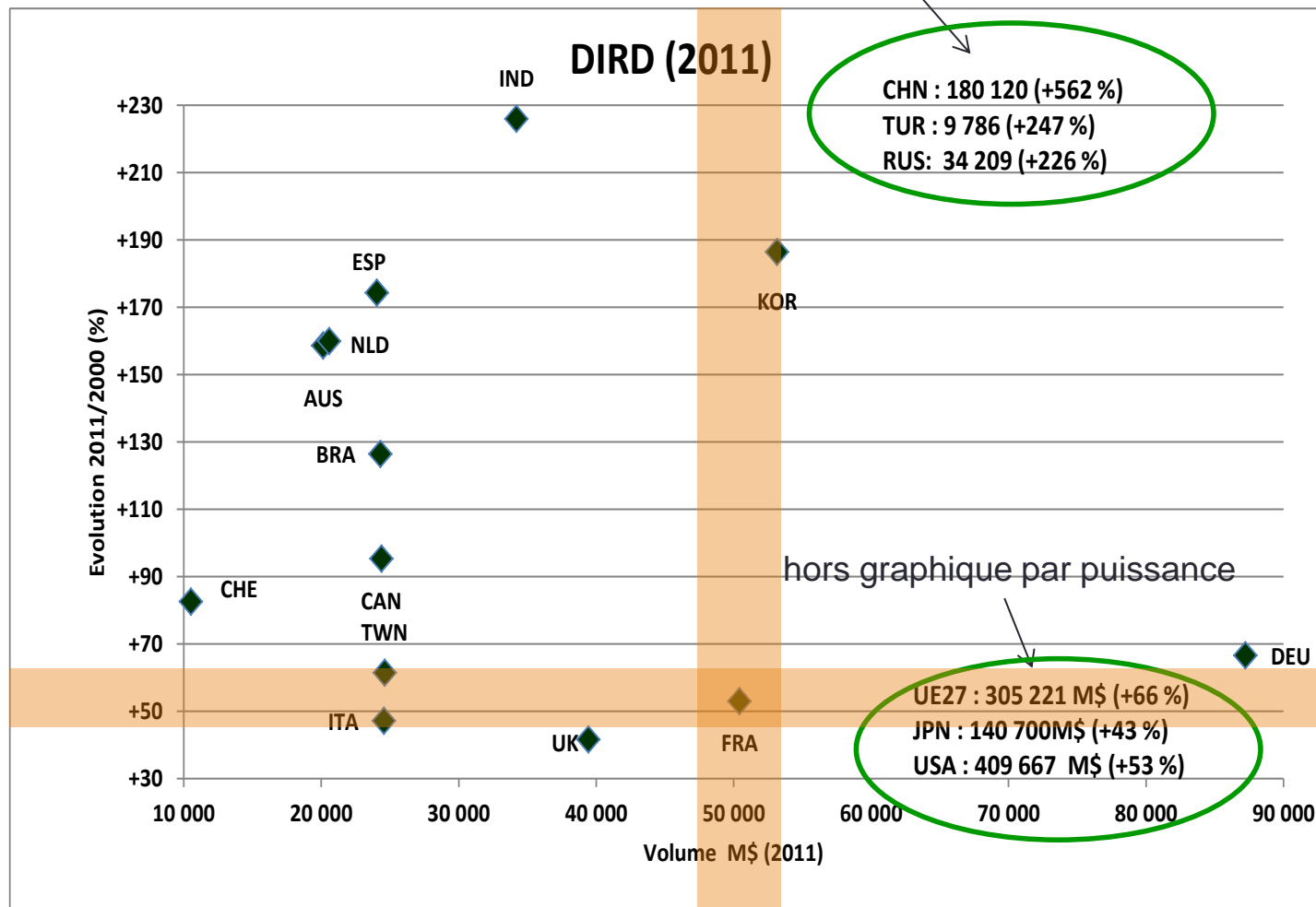


Répartition géographique de l'offre d'évaluation/accréditation internationale

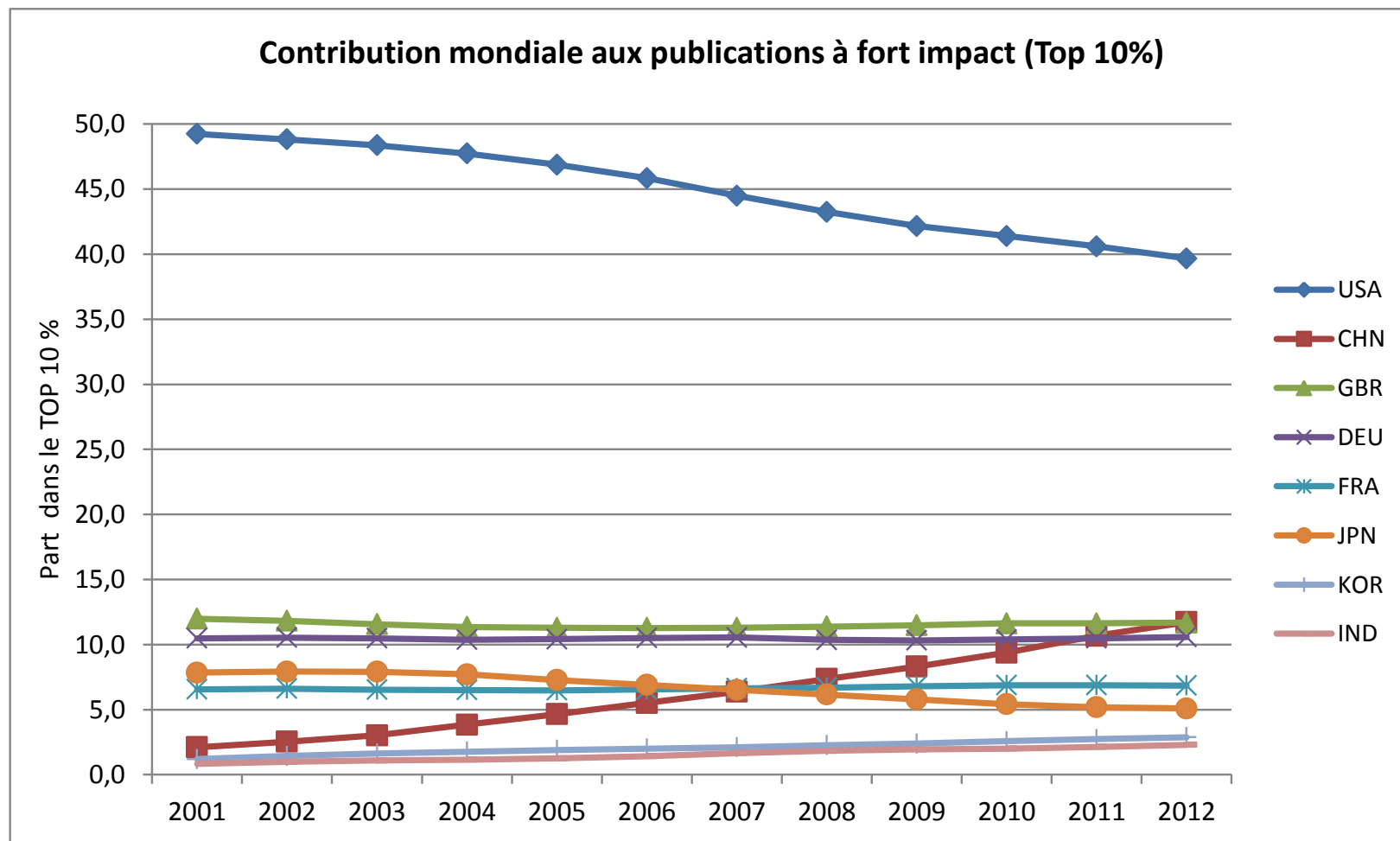


Gross Domestic Expenditure on R&D

hors graphique par dynamisme



Part (%)	
OCDE	2010
Etats-Unis	31,4
UE27	23,4
Chine	13,7
Japon	10,8
Allemagne	6,6
Corée du Sud	4,1
France	3,8
Royaume-Uni	3,0
Russie	2,5
Inde	2,4
Brésil	2,0
Canada	1,9
Italie	1,9
Taiwan	1,8



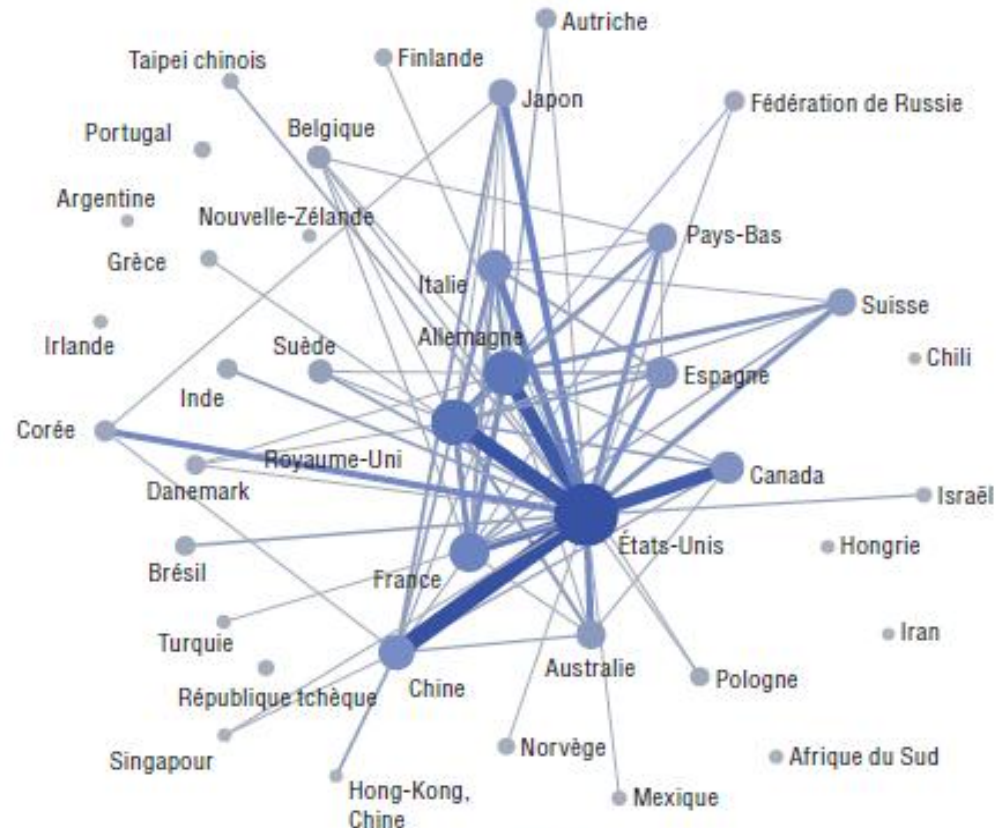
Traitements OST

Worldwide contribution to publications with high impact (Top 10%)
 Scientific visibility is a strong stamper of international leadership

The strong development of international cooperations (OCDE, 2013)

54b. Réseaux internationaux de collaboration scientifique, 2011

Comptages simples de documents faisant l'objet d'un co-autorat international



Source : Calculs de l'OCDE, d'après Scopus Custom Data, Elsevier, version 5.2012, juin 2013.

The United States remain at the centre of the international networking of research

Thank you !

Merci !

Gracias !